



2050 Regional Transportation Plan

- **Purpose of RTP:**
 - Identify the transportation guiding principles & goals for the region
 - Identify transportation investments through 2050
- **Implement community-based process**
- **Plan completion by May 2021**



Guiding Principles

- **The guiding principles of the RTC are to support:**
 - **Safe and healthy communities**
 - **Economic prosperity and innovation**
 - **Sustainability**
 - **Increase travel choices**





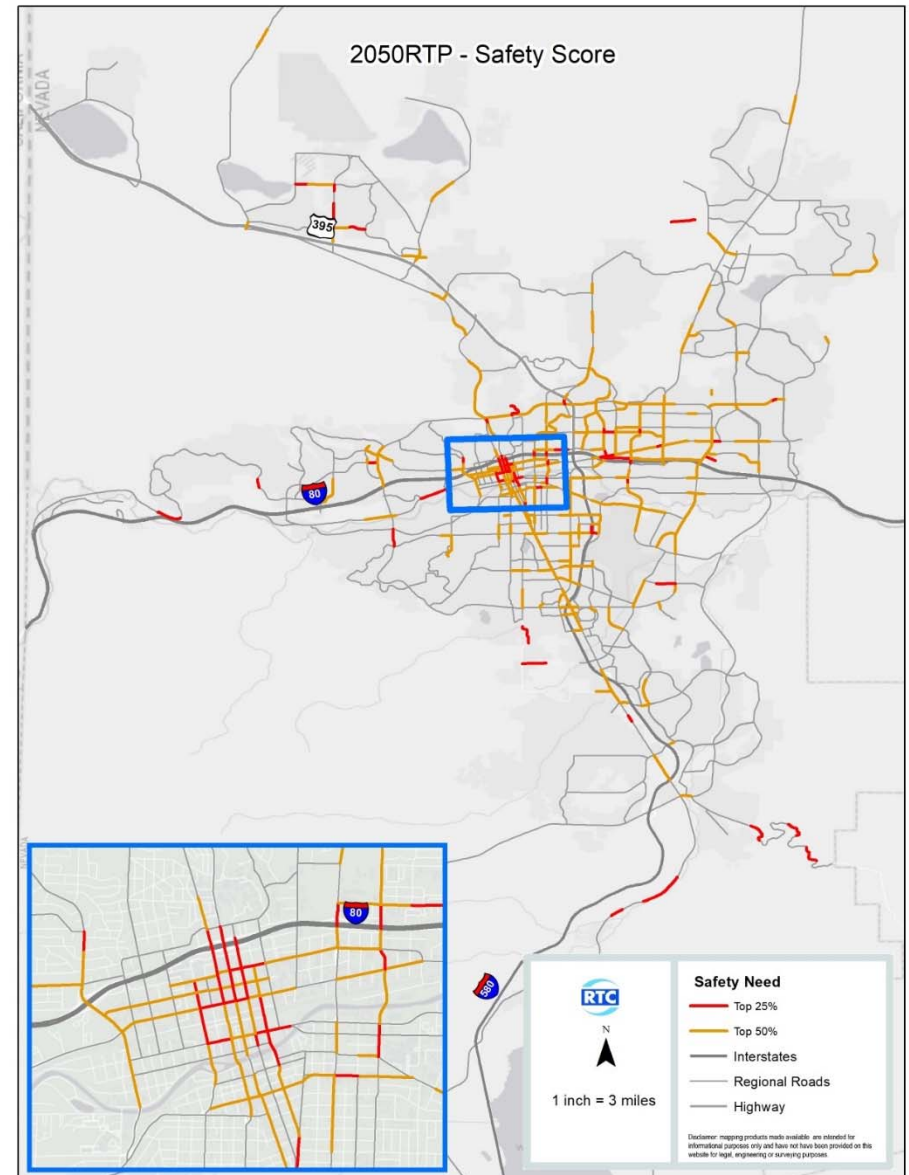
Community-Based Planning

- RTP Agency Working Group
- Inter-County Working Group
- RTC Advisory Committees
- Community Planning Workshops & Forums
- Virtual Presentations/Surveys/Social Media
- Coordinated Human Services Transportation Plan
- Presentations to Elected Officials



Improving Safety

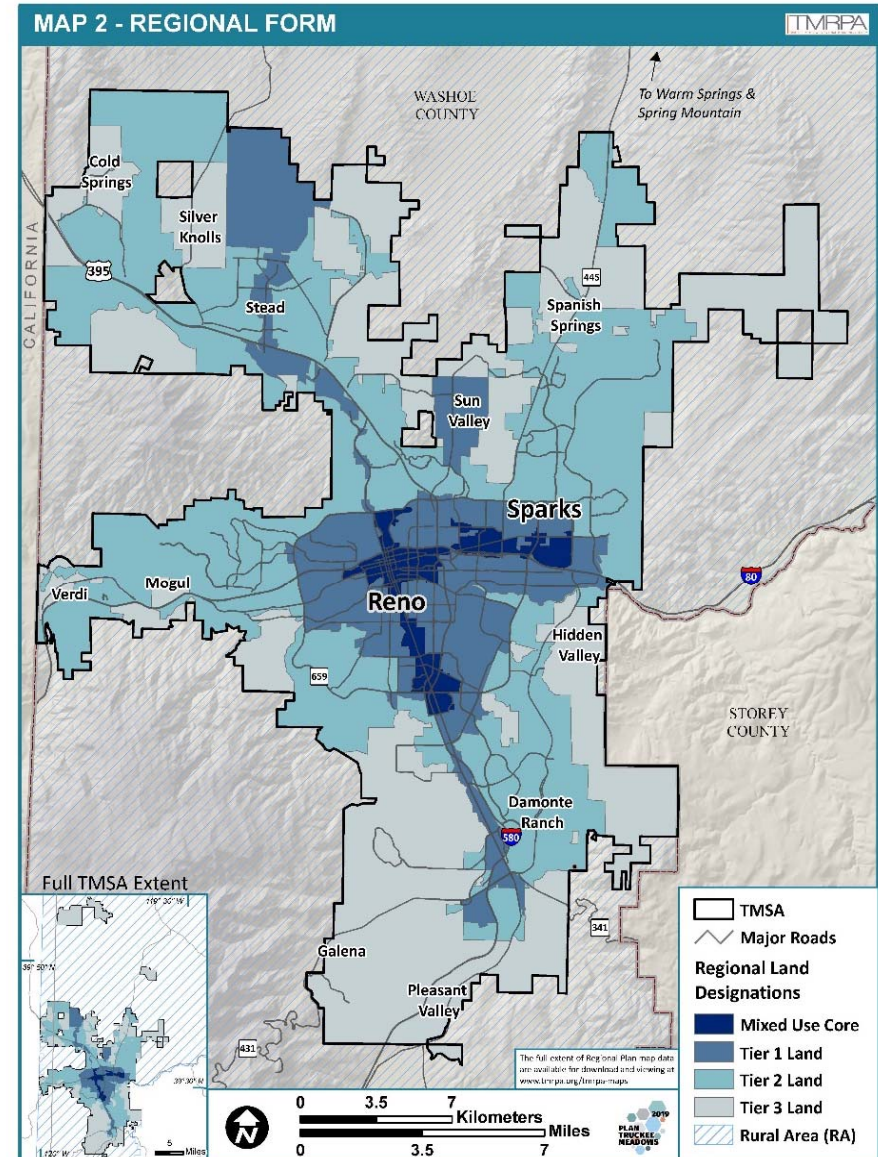
- Vision Zero Truckee Meadows
- Community Awareness & Education
- Safe Routes to School
- Nevada Strategic Highway Safety Plan
- Complete Streets Master Plan





Integrating Land Use & Economic Prosperity

- Transit Oriented Development
- Affordable Housing
- Local & Tribal Government Planning
- Economic Development Partners
- Supporting Travel & Tourism
- TMRPA Regional Plan





Promoting Healthy Communities & Sustainability

- Nevada Climate Initiative
- Air Quality/Transportation Conformity
- RTC Sustainability Plan
- Active Transportation Improvements
- Natural Resources





Other RTP Goals

- Manage existing systems efficiently
- Integrate all types of transportation
- Promote regional connectivity
- Promote equity and environmental justice
- Improve freight and goods movement
- Invest strategically
- Monitor implementation & performance



Roadway Project Preliminary Analysis

- Separate evaluation for different project types:
 - Freeways
 - New road construction
 - Capacity projects on existing roads
 - Multimodal projects without road capacity



Project Evaluation Criteria

- For all project types:
 - Safety
 - Traffic volumes/congestion
 - Project readiness
 - Regional Plan land use priority
 - Private/other agency funding
 - Equity
 - Flood mitigation
 - Public input (to be included)
 - Agency Working Group input (to be included)



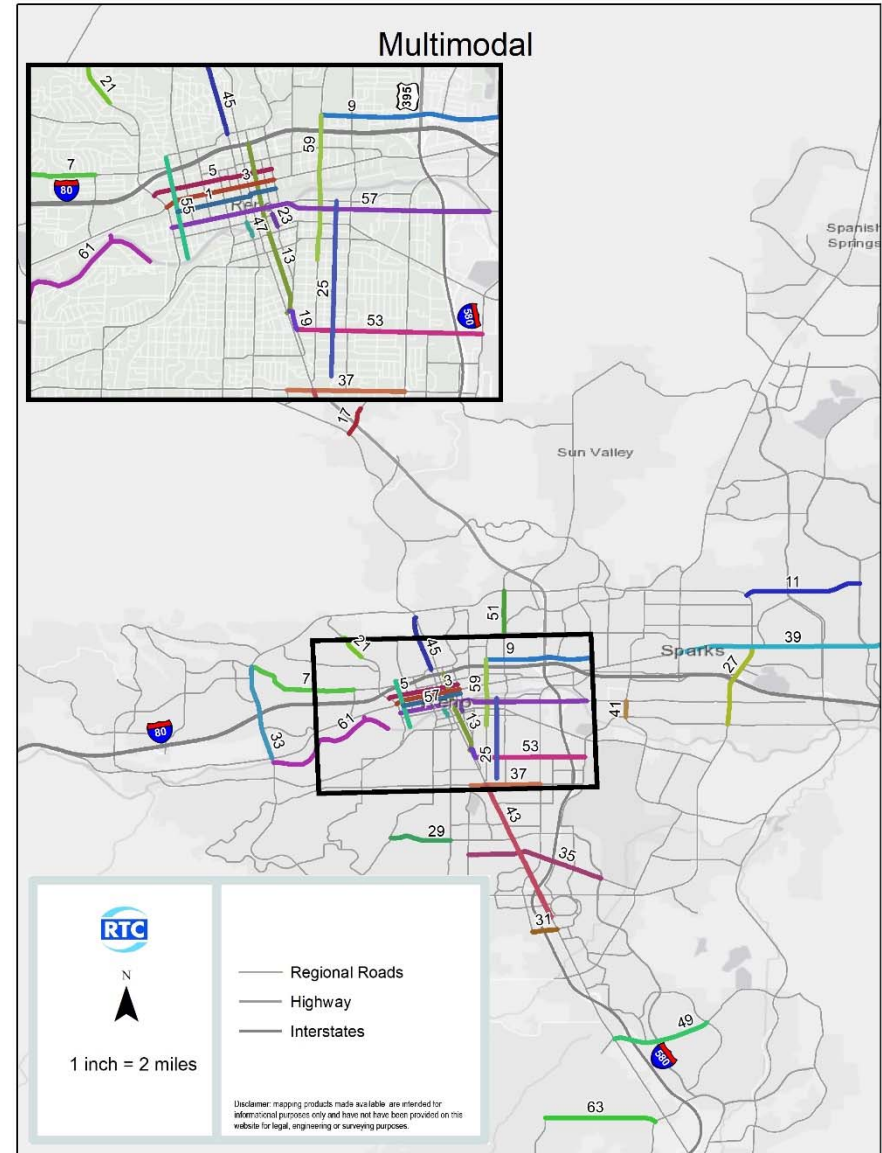
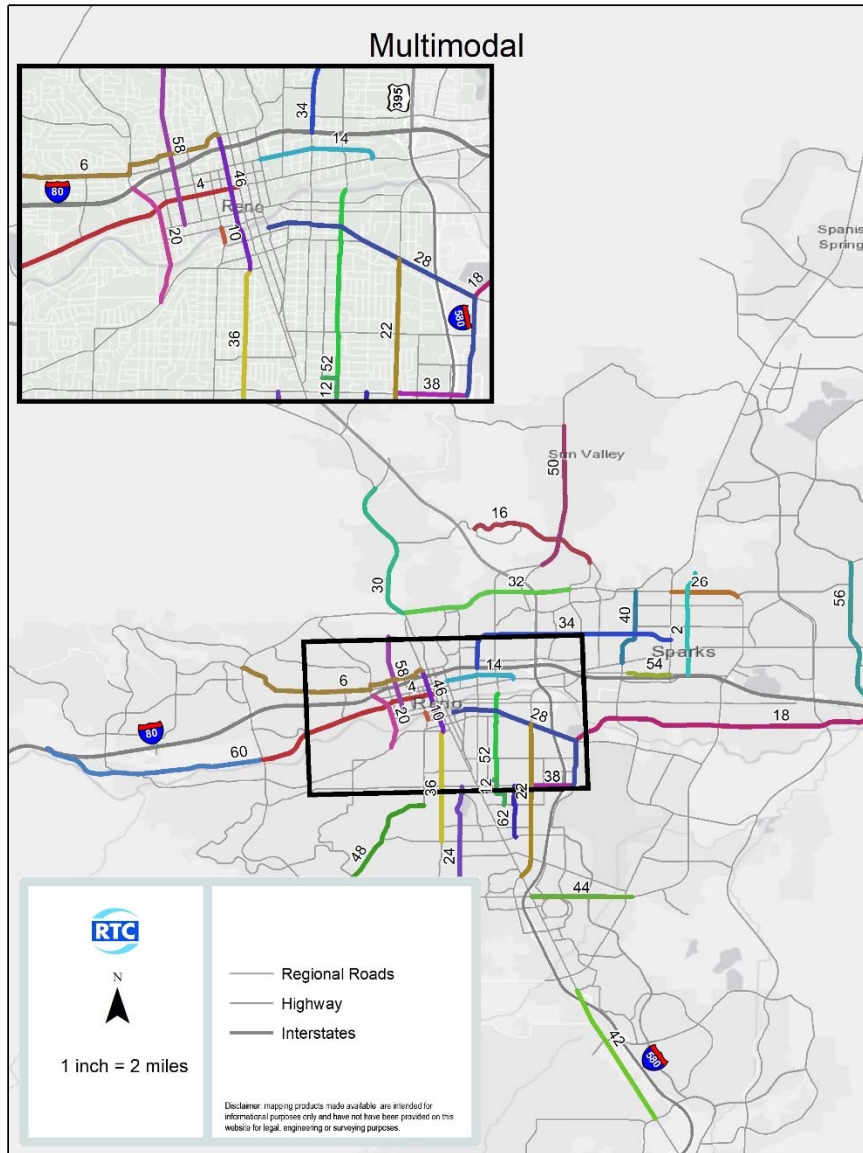
Project Evaluation Criteria

- Additional criteria for projects on existing roads:
 - Bike/Pedestrian Score
 - Pavement condition index
- Additional criteria for new road construction:
 - Cost per average daily traffic
 - Emergency response/fire evacuation



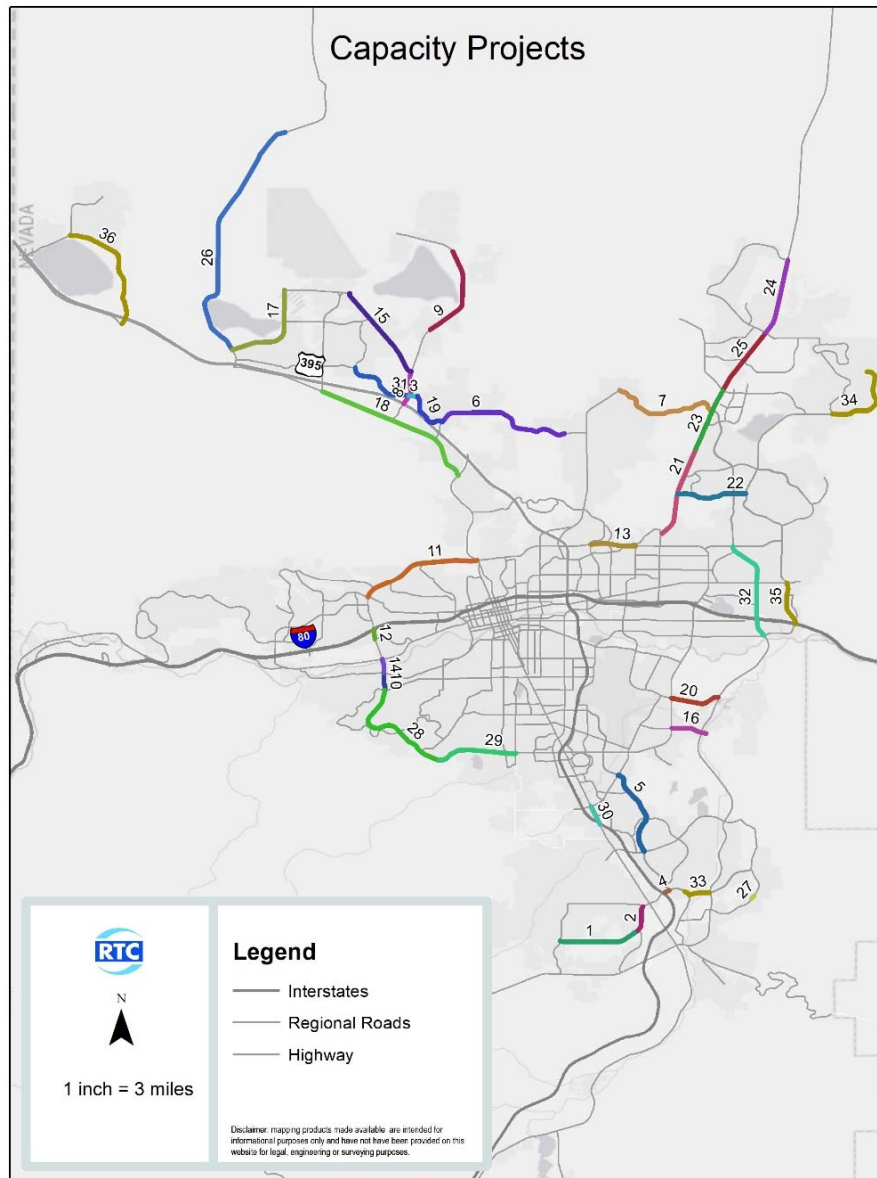
Multimodal Projects

DRAFT
Subject to Change





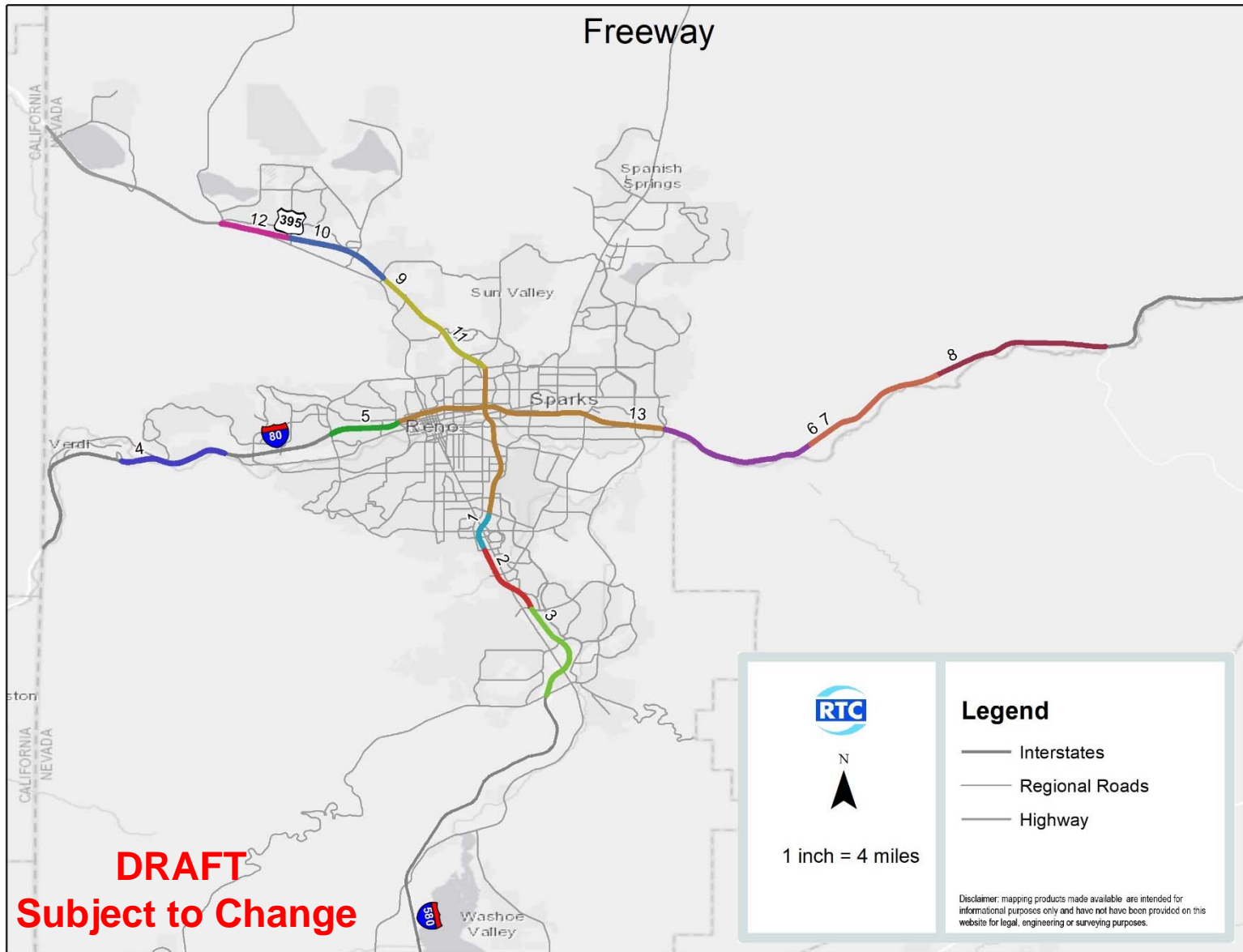
Preliminary Project Evaluation for Discussion Capacity Projects on Existing Roads



DRAFT
Subject to Change

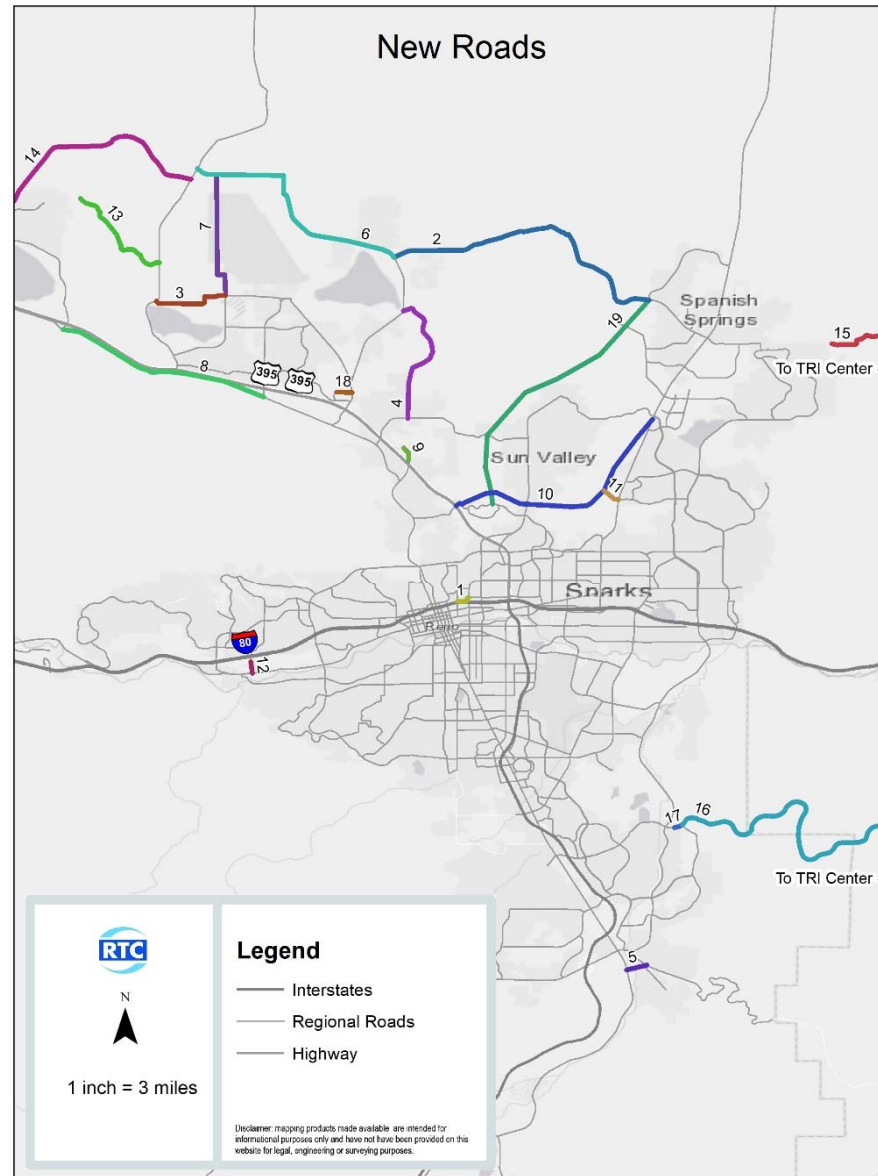


Freeway Projects under Consideration





New Road Construction Projects Under Consideration



DRAFT
Subject to Change



Priorities for the Transit System

- Productive, cost effective, high-quality transit service
- Workforce mobility & attraction of new riders
- Innovative approaches to mobility
- Maintain existing service levels and expand if additional revenue becomes available





FlexRIDE Expansions

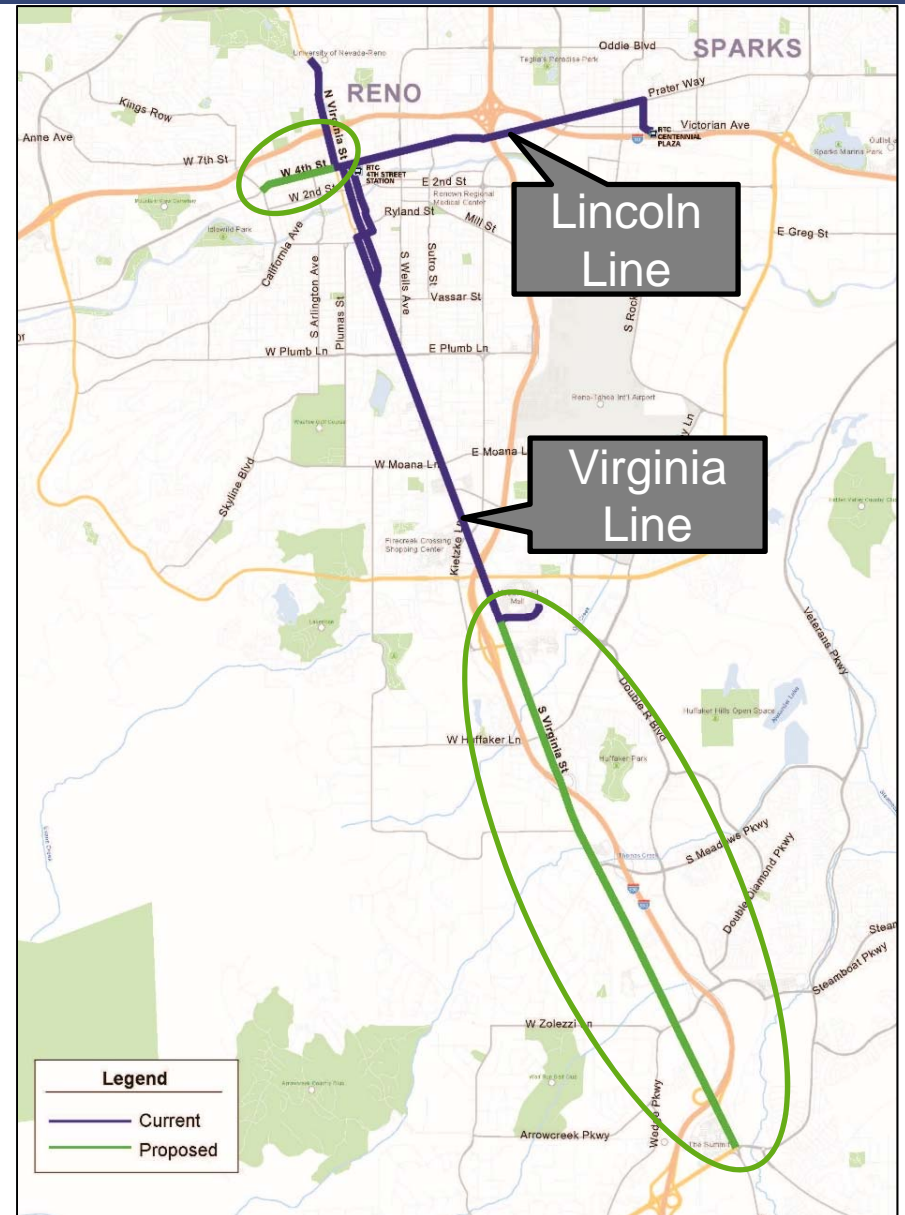
- Replace lower-performing routes
- Strategically provide service to outlying areas
- Expansions feasible if funding becomes available





RAPID Long Term Vision

- Extend RAPID service
 - Virginia Line to Mt. Rose Hwy/Geiger Grade
 - Lincoln Line to Keystone Ave
- Expand transit mode share
- Collaborate to bring housing and employment density to RAPID corridors
- Attract new riders
- Additional capital and operating funds needed





Next Steps

- Next Steps
 - Virtual public meeting & online survey through 1/14
 - Complete project evaluation & prioritization
 - Modeling & air quality analysis
 - Finalize draft plan for public comment
- Visit www.rtcwashoe.com for more information





THANK YOU

Amy Cummings

**Deputy Executive Director/
Director of Planning**

Regional Transportation Commission
of Washoe County

acummings@rtcwashoe.com

rtcwashoe.com
Your RTC. Our Community.

